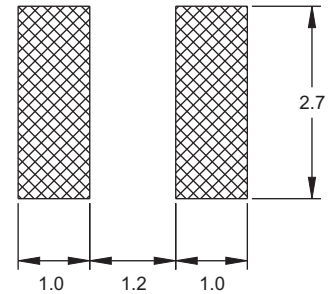
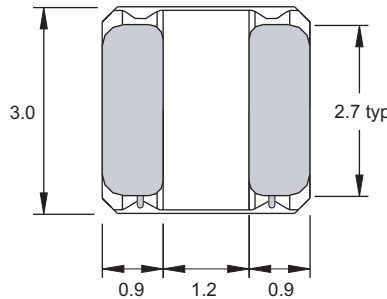
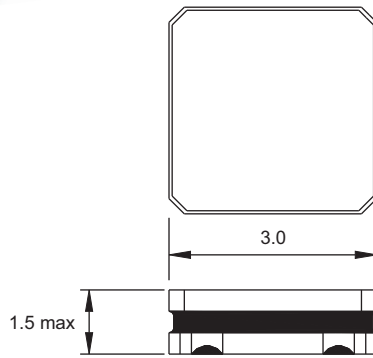
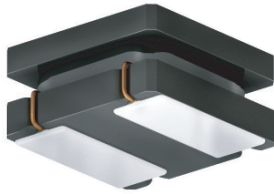
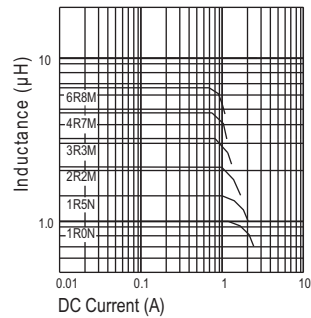
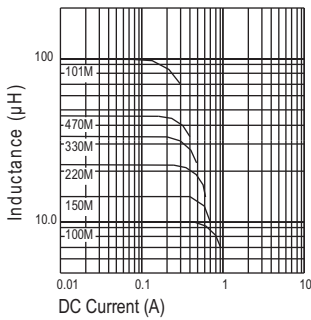


1212 FPS

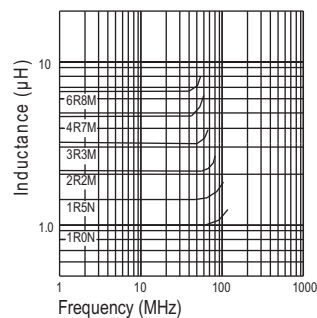
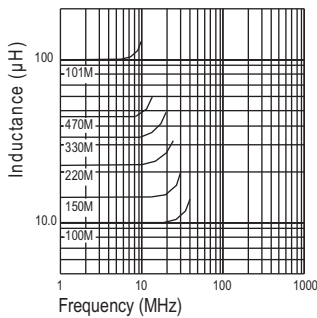


Recommended layout for solder pads

L vs Current



L vs Frequency



Part No	Inductance L (µH)	f _L (MHz)	Tol ± (%)	SRF min (MHz)	DCR (Ω)		Rated DC Current (A)			
					typ	max	I _{sat}		I _{rms}	
							typ	max	typ	max
1212FPS-1R0N-01	1.0	1.0	30	145	0.040	0.048	2.35	2.10	2.35	2.10
1212FPS-1R5N-01	1.5	1.0	30	130	0.055	0.066	2.00	1.80	2.10	1.90
1212FPS-2R2X-01	2.2	1.0	20, 30	90	0.060	0.072	1.65	1.48	1.80	1.60
1212FPS-3R3X-01	3.3	1.0	20, 30	75	0.093	0.112	1.40	1.21	1.60	1.45
1212FPS-4R7X-01	4.7	1.0	20, 30	65	0.113	0.136	1.20	1.08	1.40	1.25
1212FPS-6R8X-01	6.8	1.0	20, 30	50	0.176	0.211	1.05	0.90	1.10	0.90
1212FPS-100X-01	10	1.0	20, 30	45	0.234	0.276	0.88	0.75	1.00	0.87
1212FPS-150X-01	15	1.0	20, 30	33	0.352	0.422	0.68	0.58	0.80	0.65
1212FPS-220X-01	22	1.0	20, 30	28	0.510	0.622	0.58	0.47	0.60	0.55
1212FPS-330X-01	33	1.0	20, 30	22	0.799	0.959	0.46	0.39	0.50	0.45
1212FPS-470X-01	47	1.0	20, 30	18	1.172	1.406	0.38	0.32	0.40	0.40
1212FPS-101X-01	100	1.0	20, 30	11	2.433	2.920	0.27	0.23	0.29	0.25

Material : Ferrite

SPQ : Reel 2000 [-01]

Chip Inductors for Power Applications (Shielded)

Chip Inductors for Power Applications (shielded)

Our new 1212 (3x3mm) foot print Chip Inductors designed with a high flux density ferrite core. The max height is only 1.5mm with a flat top surface for SMT assembly. The inductance range is from 1uH to 100 uH. Rated currents of up to 2.1A. There are two versions, magnetically shielded with epoxy resin (1212FPS) and non-shielded (1212FP). This inductor is RoHS compliant and one reel contains 2,000 pieces.

Applications Suitable for circuits where high current saturation is critical. When small size matters, only 1.5mm high for DC/DC converters, for example in portable devices. Backlight for Tablet Displays

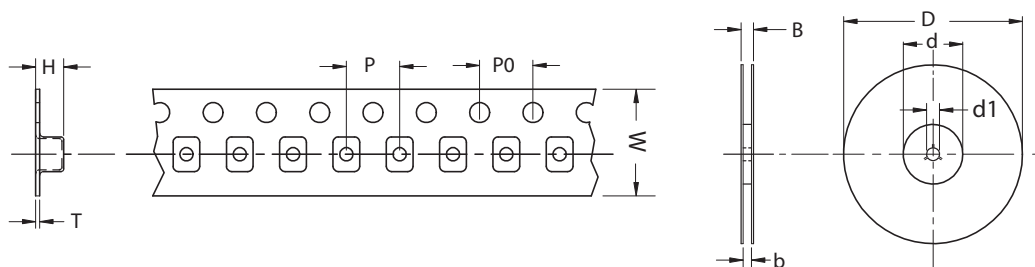
Technical Data		
L – Value (rated inductance)		Measured with HP 4286A RF LCR meter at frequency f_L
SRF (min)		Measured with HP 4291B
DCR (max)		Measured at 25°C
Operating Temperature		From -40°C to +105°C (includes component self-heating)
Surface Finishing		Flat top for perfect pick and place assembly
Pad Metallization		Tin as top layer
Wire Termination		Spot welding covered with tin layer

Ordering Code Example: 1212FPS-1R0X-01

1212 (Case Size) **FPS** (Core Type) - **1R0** (Inductance Value) **X** (Tolerance) - **YY** (Packing Code) → **1212FPS-1R0K-01**

Case Sizes - 1212
 Core Type - F (Ferrite)
 Tolerances - M (20%), N (30%)
 Packing Code - 01 (Reel)

Packing Specification



drawing only schematic, see table

Type	D	d	d1	B	b	W	P	P0	T
1212	180	50	13	12.5	8.4	8	2	4	0.25